



GIEN



Selling points
Spring-summer collection 2019

LA FAÏENCERIE DE GIEN

A legacy at the heart of our identity

For the past two centuries, Faïencerie de Gien has been a part of France's heritage, recognized the world over. It first gained renown through the production of dinner services bearing crests of families of the aristocracy and landed gentry in France and Europe. As from 1930 it became known through the production of tiles for the Parisian metro walls.

At the Paris Universal Exhibition held in 1889 the Faïencerie de Gien was awarded the 'Grand Prix' gold medal. Today the company is a member of the prestigious Comité Colbert, a group bringing together the greatest names in luxury, excellence and French Art de vivre.

The Faïencerie also carries the EPV label, a Living Heritage Company certification.

You can find Gien Faïence in the most exclusive stores and boutiques in the world. It is exported to 45 different countries.

The Faïencerie de Gien still controls to this day the entire making process of its goods, from sourcing raw materials (sand, clays, kaolin), to making clay paste and producing the finished product. All plaster casts and glazes are also designed and produced in Gien. Gien Faïence is 100% Made in France !



FAÏENCE DE GIEN, A NOBLE MATERIAL

A warm and vibrant substance

It is a vibrant, natural, sensual and glowing substance, an ideal medium for a broad spectrum of radiant color. The Gien Faïencerie is recognized today as the leading high quality faïence producing factory in France.

The products manufactured in Gien are branded with a strong identity and are in a class apart from other ceramic goods by virtue of their opulence, elegance, diversity of shape and pattern. It is important to differentiate between industrial porcelain and hand-crafted Faïence.

Our authenticity, our creativity, our materials, are the strong distinctive features of Gien. Gien is an historic, living legacy.



CONTENTS

NEW

1. DOMINOTÉ

Antoinette Poisson

2. LEONARDO DA VINCI

Celebrating 500 years since the Renaissance

3. EXTENSIONS

Millefleurs, Toscana, Route des Indes,
Jardins Extraordinaires et Sologne

Dominoté

When tradition meets know-how









Collection Dominoté

Faïencerie de Gien presents their new collection : Dominoté, born from their debut collaboration with the talented trio Antoinette Poisson: the obvious encounter of two houses with unique know-how.

Gien, a high-end French earthenware factory, joins forces with the young team of designers of hand-painted wallpaper to create a rich collection of shapes and patterns. «Dominoterie» is a traditional printing technique dating from the eighteenth century. At that time, domino motifs were hand-printed and hand-colored.

For this first joint initiative, Faïencerie de Gien has chosen to work with five different patterns comprising roses, chevrons, chintz and plumetis. These exclusive drawings for Gien, mixed with eighteenth-century archives adorn a variety of shape and form originating from Gien's rich heritage of earthenware.



Dominoté

Antoinette Poisson

A PARIS CHEZ
ANTOINETTE POISSON.



Julie Stordiau, Vincent Farely & Jean-Baptiste Martin form a group of conservation professionals specializing in wall coverings. All three hold degrees from the Institut National du Patrimoine (National Heritage Institute), and La Sorbonne, Paris. Old friends, they worked together on restoration projects and historical interior reconstruction sites.

Their story began on a restoration site in a historic mansion in Auvergne (central France) where they came across remnants of ancient domino pattern wall coverings beneath layers and layers of wallpaper added over the centuries. To restore these paper remnants to their former splendor they delved into the history of wall coverings ... their passion for this ancient and forgotten technique was born.

In 2012 the three start up in business together with the challenge of rekindling the skill, emblematic of French 18th century decorative arts. Their activity gets underway and they open a shop in Paris under the name « A Paris Chez Antoinette Poisson », chosen in honor of the Marquess de Pompadour, whose maiden name was Jeanne-Antoinette Poisson. She was an art enthusiast and loved decorative wall coverings. Their work brings a revival of all the charm and appeal of intimate 18th century atmospheres.



• Dominoté wallpaper :

During the eighteenth century domino motifs were hand-printed on paper sheets, one by one, using a hand operated plate press. The printed sheets were then colored by hand. Dominoté paper, decorated with floral or geometric motifs, was used to line the insides of chests, wardrobes, boxes and caskets. It also served to decorate the walls of small rooms. It was also used to bind books. These decorative papers gradually disappeared towards the end of the eighteenth century with the invention of wallpaper in rolls. This unique, long-forgotten know-how is being brought back to life at the hands of Antoinette Poisson dominoté paper makers, in keeping with traditional eighteenth century craft techniques.

Dominoté

Antoinette Poisson



• Scallop plates :

The « Scallop » shape of the plates is enhanced with banding applied by hand, using colors developed exclusively at the Manufacture. This model stands in the tradition of major French faïence makers. The color of the banding brings a punchy finishing touch to this classic shape. A new chapter has begun in the story of our legacy and know-how.



• When Scallop shape meets Domino motif :

- A neo-retro collection – Dominoté : when tradition meets up with know-how
- A pattern with motifs both high in color and graphic
- 18th century inspiration – motifs from a legacy of 18th century decorative arts
- Dominoté wallpaper tradition
- GIEN and Antoinette Poisson : two brands come together in a joint venture full of history



GIEN

A PARIS CHEZ

ANTOINETTE POISSON.

Dominoté

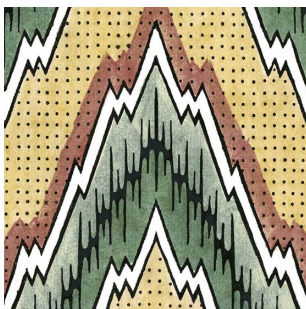
A heritage of motifs from 18th century decorative arts

Dominoté wallpaper tradition



ROSES PATTERN N°51 - GIEN EXCLUSIVE

Flowering garland, high tradition motif in dominoté wallpaper. Since the 18th century, floral print motif is associated with springtime.



LOUIS XIII PATTERN N°50 - GIEN EXCLUSIVE

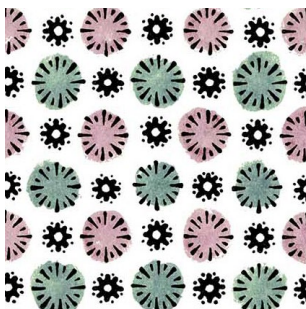
Geometric motif inspired by Ikat, a craft weaving technique. The distinctive character of Ikat is the warp yarns are dyed prior to weaving, which brings more definition and regularity to the pattern. Inspiration for the stripes motif comes from 18th century fabric motifs, which in turn drew influence from Asian textiles.



INDIENNE PATTERN N°30

Antoinette Poisson Collection

Motif inspired by « Indiennes » textiles, thus named by virtue of their country of origin : India. Indiennes were the first print fabrics, introduced into Europe at the end of the 16th century. Their colored « exotic » floral motifs have lived on. These motifs depicted varieties of the plant kingdom that were at the time unknown to the western world.



ARTIFICES PATTERN N°49 - GIEN EXCLUSIVE

Small green and pink plumetis features. These were another trend in 18th century decorative arts. Traditional dominoté hand-painted wallpaper theme.



MEDECIS PATTERN N°48

Antoinette Poisson Collection

A repetition of green and pink geometric motifs, flowers and quatrefoils inspired by stained glass windows and architecture of the period.

Dominoté

Antoinette Poisson



Assiette plate extra (x4)
Dinner plate
Eßteller
Ø 26 cm **1844B4E422**
10 1/4" dia



Assiette creuse (x4)
Rim soup
Teller tief
Ø 22,5 cm **1844B4Y122**
8 7/8" dia



Coupe individuelle (x4)
Cereal bowl
Obstschale **1844C04F22**
Ø 17 cm. 35 cl
6 11/16" dia. 7 2/3" oz. H 2"



1. Artifices



2. Indienne



1. Artifices



2. Indienne



3. Louis XIII



4. Roses



3. Louis XIII



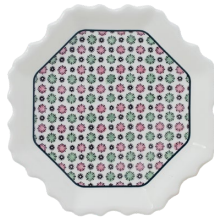
4. Roses

Assiette dessert assortie (x 4)
Dessert plate
Dessertteller
Ø 23,2 cm **1844B4AD22**
9 1/8" dia

Assiette canapés assortie (x 4)
Canape plate
Cocktailteller
Ø 16,5 cm **1844B4BX22**
6 1/2" dia



Saladier individuel XL (x2)
Cereal bowl XL
Schale groß XL **1844C2EG22**
Ø 17,8 cm. 63 cl
7" dia. 21 5/16" oz. H 2 1/2"



Plateau Rouen dentelé (x 1)
Rouen tray
Platte Rouen **1844CPDE31**
Ø 21,2 cm
8 3/8" dia



Porte-cartes Pompadour (x 1)
Letter tray Pompadour
Viereckige Schale
15 x 15 cm **1844CPC131**
5 15/16" x 5 15/16"



Drageoir festonné (x 1)
Candy tray
Kleine Platte oval
13,2 x 10 cm **1844CCFE31**
5 3/16" x 3 15/16"



Petit plateau rectangulaire
Butter tray (x 1)
Butterplatte **1844CPBE22**
17,8 x 13,5 cm
7" x 5 5/16"



Ravier Medecis (x 1)
Pickle dish
Beilage **1844CRA022**
26,5 x 13,2 cm
10 7/16" x 5 3/16"



Ravier Indienne (x 1)
Pickle dish
Beilage **1844CRA222**
26,5 x 13,2 cm
10 7/16" x 5 3/16"



Bougie parfumée (x 1)
Scented candle
Duftkerze
H 9,5 cm
3 3/4" h **8006DPC400**
40 heures / hours



Pot à crayon (x 1)
Pencil holder
Bleistifthalter
H 9,5 cm
3 3/4" h **1844CPC400**



Mug Indienne (x 1)
Mug **1844CMU248**
Henkelbecher
25,5 cl. H 9,5 cm
8 5/8 oz. 3 3/4" h



Mug Louis XIII (x 1)
Mug **1844CMU348**
Henkelbecher
25,5 cl. H 9,5 cm
8 5/8 oz. 3 3/4" h



Mug Roses (x 1)
Mug **1844CMU448**
Henkelbecher
25,5 cl. H 9,5 cm
8 5/8 oz. 3 3/4" h

Dominoté

Antoinette Poisson



Tasse, soucoupe à café (x2)
A.D. cup & saucer
Mokkatasse mit Untere
8,5 cl. Ø 14 cm **18442PC326**
2 ⁷/₈ oz - 5 ¹/₂" dia



Tasse, soucoupe à thé US (x2)
US Tea cup & saucer
US Teetasse mit Untere
17,5 cl. Ø 15,3 cm **18442PU449**
Cup 3 ³/₈" dia. 5 ¹⁵/₁₆" oz - Saucer 6" dia



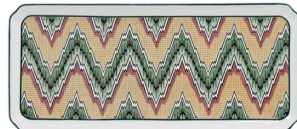
Tasse, soucoupe à déjeuner Jumbo (x1)
Jumbo cup & saucer
Jumbotasse mit Untere
45 cl - Ø 18,8 cm. H 8,5 cm
Cup 15 ¹/₄ oz. 4 ³/₄" dia. 3 ³/₈" h
Saucer 7 ³/₈" dia **18441PJ126**



Bonbonnière carrée (x1)
Square candy box
Quadratische bonbonniere
11 x 11 x 5 cm **1844CBLC00**
4 ⁵/₁₆" x 4 ⁵/₁₆" x 1 ¹⁵/₁₆"



Plat à gâteaux (x1)
Cake platter
Kuchenplatte
Ø 30 cm **1844BPGA22**
11 ¹³/₁₆" dia



Plat à cake (x1)
Oblong serving tray
Königskuchenplatte
36 x 15,5 cm **1844CPCA48**
14 ³/₁₆" x 6 ¹/₈"



Plat ovale n°6 (x1)
Oval platter
Platte oval
41 x 26,2 cm **1844COV622**
16 ¹/₈" x 10 ⁵/₁₆"



Saladier Harmonie n°1 (x1)
Serving bowl # 1
Salatschüssel Nr 1
1 L 20. Ø 21,3 cm - H 8,5 cm
42 ¹/₄ oz. 8 ³/₈" dia
1844CSA149



Plat de service (x1)
Serving platter
Servierplatte
45 x 36 cm **1844CPL131**
17 ³/₄" x 14 ³/₁₆"



Grand plat Louis XIII (x1)
Large wall platter
Wandplatte
Ø 61,5 cm **1844CF0303**
Ø 24 ³/₁₆"



Grand plat Roses (x1)
Large wall platter
Wandplatte
Ø 61,5 cm **1844CF0403**
Ø 24 ³/₁₆"

Dominoté

- Patterned packaging



«Roses» Mug



«Indienne» Mug



«Louis XIII» Mug



Candy tray



Square candy box



Scented candle



Pencil holder



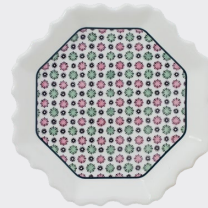
Butter plate



Pickle dish



Letter tray Pompadour



Rouen tray



Jumbo cup & saucer



Other pieces in the collection are presented in a grey gift box with Gien x Antoinette Poisson label

Dominoté

Additional range

Acrylic serving tray collection



Plateau XS Medecis (x1)
Acrylic serving tray XS
Tablett XS
18 x 24 cm **8009D0XSPL**
7 ¹/₁₆" x 9 ⁷/₁₆"



Plateau XS Indienne (x1)
Acrylic serving tray XS
Tablett XS
18 x 24 cm **8009D2XSPL**
7 ¹/₁₆" x 9 ⁷/₁₆"



Plateau XS Artifices (x1)
Acrylic serving tray XS
Tablett XS
18 x 24 cm **8009D1XSPL**
7 ¹/₁₆" x 9 ⁷/₁₆"



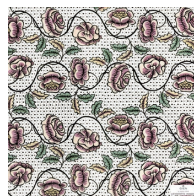
Plateau XS Louis XIII (x1)
Acrylic serving tray XS
Tablett XS
18 x 24 cm **8009D3XSPL**
7 ¹/₁₆" x 9 ⁷/₁₆"



Plateau P.M. acrylique (x1)
Acrylic serving tray small
Tablett klein
37 x 28,3 cm **8009D2PMPL**
14 ⁹/₁₆" x 11 ¹/₈"

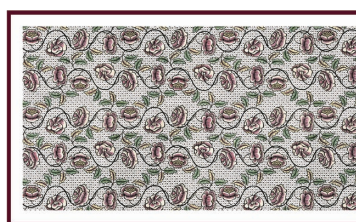


Plateau G.M. acrylique (x1)
Acrylic serving tray large
Tablett groß
46,4 x 36,4 cm **8009D4GMPL**
18 ¹/₄" x 14 ⁵/₁₆"



Serviettes papier lunch
12 paquets de 10 serviettes
Paper napkins
33 x 33 cm **8004D04LSE**
13" x 13"

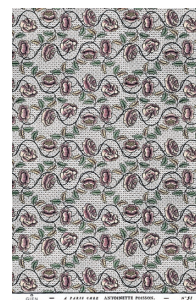
Table linen collection



Chemin de table (x1)
Table runner
Tischläufer
50 x 132 cm **8003DOC140**
19 ¹¹/₁₆" x 51 ¹⁵/₁₆"



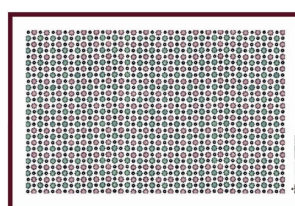
Nappe carrée P.M. (x1)
Tablecloth
Tischdecke
120 x 120 cm **8003D01240**
47 ¹/₄" x 47 ¹/₄"



Torchon (x1)
Tea towel
Geschirtuch
45 x 70 cm **8003DOTO40**
17 ¹¹/₁₆" x 27 ⁹/₁₆"



Set de table Roses (x1)
Placemat
Tischset
38 x 54 cm **8003DOST40**
15" x 21 ¹/₄"



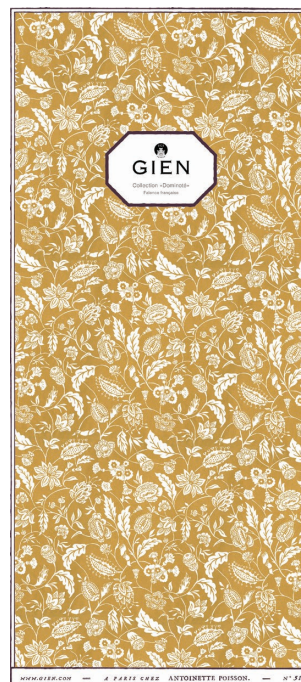
Set de table Artifices (x1)
Placemat
Tischset
38 x 54 cm **8003DOST10**
15" x 21 ¹/₄"

Dominoté

Merchandising guidelines



Tote bag Dominoté
9999SDOM00



Banner Dominoté
75 x 170 cm
8000KADO00



Wall shelves display

Dominoté

Merchandising guidelines



Window display large



Window display small

Dominoté

Hand-painted

Faïencerie de Gien and Antoinette Poisson hook up their skills to present an exclusive and lavishly colorful joint edition on the Dominoté theme. It consists of 4 decorative hand painted pieces. The pattern, depicted with subtle grace and freshness, is a reprise of an Iznik style floral motif. Richly colored generous blooms come together with Antoinette Poisson wallpaper borders to create a stylish, harmonious and timeless effect.

• Japanese potiche, willow green slip

The production of this piece involves a faïence craftsman applying willow green tinted slip on pure white biscuit. This operation requires both an assertive turn of hand and sharp attention to detail. The technique is known as « slip painting » or sometimes « engobe », and has been in practice for several hundred years and was already used in Gien in the nineteenth century. The making process necessitates 4 firing operations : biscuit, slip, paint and finally glaze. The piece embodies a skillful blend of technical expertise and artistic excellence. It is the tale of two houses keen to perpetuate traditions and in so doing, create a fashionable and prestigious design. All the creative talent of Gien craftsmanship, in the realm of both color and faïence, is featured here in a lifting array of subtle hues. The addition of the willow green background gives the piece body and depth.

• Japanese potiche, white background

On the generous shapely curves of this piece Gien comes into its own in a flourish of flowers, colors and geometric motifs.



Potiche Japonaise Floral
Japanese potiche
H 48 cm - dia 23 cm
18 7/8" h - 9 1/8" dia
200 ex - #200 1846CPJ100



Potiche Japonaise Floral Céladon
Japanese potiche
H 48 cm - dia 23 cm
18 7/8" h - 9 1/8" dia
200 ex - #200 1846CPJ200

• Apothecary jar

Gien completes the collection with 2 apothecary jars each featuring a different pattern. The patterns are both contrasting and complementary. One is themed on floral motifs, the other geometric. These two interpretations each adorn the faïence jar producing a serene and pleasing set, highlighting the elegance of Dominoté hand painted pieces.



Pot à pharmacie Floral
Pharmacy jar
H 27 cm - dia 12,5 cm
10 5/8" h - 4 15/16" dia
200 ex - #200 1846PPP100



Pot à pharmacie Ruban
Pharmacy jar
H 27 cm - dia 12,5 cm
10 5/8" h - 4 15/16" dia
200 ex - #200 1847PPP300



Léonard de Vinci

Celebrating 500 years since the Renaissance





Leonardo da Vinci

Celebrating 500 years since the Renaissance

MACHINES



Assiette mignardises Machines (x 4)
Coaster assorted
Konfiserieteller sortiert
Ø 12,8 cm **1845C4DM20**
5" dia



Porte-cartes G.M Machines (x 1)
Square large candy tray
Quadratische Schale tief
17 x 17 cm **1845CCE201**
6 11/16" x 6 11/16"



Mug Machines (x 1)
Mug **1845CMU248**
Henkelbecher
25,5 cl. H 9,5 cm
8 5/8 oz. 3 3/4" h



Vide-poches Machines (x 1)
Letter tray
Rechteckige Platte, klein
19,3 x 10 cm
7 9/16" x 3 15/16" **1845CVI201**

CHEVAUX



Assiette mignardises Chevaux (x 4)
Coaster assorted
Konfiserieteller sortiert
Ø 12,8 cm **1845C4DC20**
5" dia



Porte-cartes G.M Chevaux (x 1)
Square large candy tray
Quadratische Schale tief
17 x 17 cm **1845CCE101**
6 11/16" x 6 11/16"



Mug Chevaux (x 1)
Mug **1845CMU148**
Henkelbecher
25,5 cl. H 9,5 cm
8 5/8 oz. 3 3/4" h



Vide-poches Chevaux (x 1)
Letter tray
Rechteckige Platte, klein
19,3 x 10 cm
7 9/16" x 3 15/16" **1845CVI101**



Plat à cake Chevaux (x 1)
Oblong serving tray
Königskuchenplatte
36 x 15,5 cm **1845CPC101**
14 3/16" x 6 1/8"

Leonardo da Vinci

- Faïencerie de Gien, as far back as 1865, has been fond of themes celebrating the Renaissance. So it is only natural for the Faïencerie to participate in the commemoration marking 500 years since the Renaissance began. This has taken the shape of a collection of pieces featuring details from works by Leonardo da Vinci.
- Drawing inspiration from archive graphics, and mainly from the « codex » (Leonardo da Vinci's note- and study books containing pages of writings and drawings), this collection revolves around two major themes : inventions (machines and architecture) and horses. These works are noteworthy in their illustration of the man as an engineer and inventor, but also as a scientist, documenting his advances in the field of anatomy (animal anatomy here).
- Taken from his graphic work, the « inventions » theme is the best known ; the horses theme is less known but equally as outstanding in diagrammatic terms. The horse theme dates to a commission from the Duke of Milan to create the world's largest statue of a horse. This led Leonardo da Vinci to conduct a large amount of research into equine anatomy.
- This is essentially a « gift » collection comprising 2 gift boxes of assorted coaster plates (4 horses + 4 machines), 2 mugs, 2 letter-trays, 2 large letter-trays, and an oblong serving tray.
- The « parchment » aspect of the paper, worn by the passage of time, has been kept deliberately. The depictions of drawings, crayon sketches, notes, texts and ink scribbles, are true to the originals.
- Coordinated packaging has been designed and developed to present this collection. The history related on the piece of faïence unfolds on the matching box !



Packaging

Breakfast extensions

MILLEFLEURS



Bol G.M. (x 1)
Bowl large
Bol XL **1643C01H80**
70 cl. Ø 15,5 cm. H 9 cm
23 11/16 oz. 6 1/16" dia. 3 9/16" h

ROUTE DES INDES



Bol G.M. (x 1)
Bowl large
Bol XL **1748C01H80**
70 cl. Ø 15,5 cm. H 9 cm
23 11/16 oz. 6 1/16" dia. 3 9/16" h

TOSCANA



Bol G.M. (x 1)
Bowl large
Bol XL **1457C01H80**
70 cl. Ø 15,5 cm. H 9 cm
23 11/16 oz. 6 1/16" dia. 3 9/16" h

SOLOGNE



Bol G.M. (x 1)
Bowl large
Bol XL **1631C01H80**
70 cl. Ø 15,5 cm. H 9 cm
23 11/16 oz. 6 1/16" dia. 3 9/16" h

JARDINS EXTRAORDINAIRES



Bol G.M. (x 1)
Bowl large
Bol XL **1824C01H80**
70 cl. Ø 15,5 cm. H 9 cm
23 11/16 oz. 6 1/16" dia. 3 9/16" h

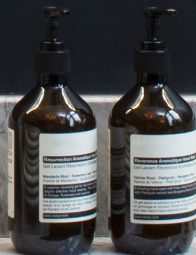


Tasse, soucoupe déjeuner Jumbo
Jumbo cup & saucer (x 1)
45 cl - Ø 18,8 cm. H 8,5 cm
Cup 15 1/4 oz. 4 3/4" dia. 3 3/8" h
Saucer 7 3/8" dia **18241PTJ01**

Breakfast extensions

- For breakfast, a special time of bliss to enjoy, choose your favorite pattern to share and relish a moment of pleasure.
- These pieces, matched with the pattern of your choice, will make an ideal gift that is both useful and attractive.
- Gien brings out a new form in its best-selling patterns in the shape of a large size bowl, offering a wide choice of floral and exotic pleasures at breakfast.

w





AGORA

Come and see your Agora store :

<http://agora.gien.com>

login : partner

password : gien

All visuals, texts, selling points, catalogues, marketing tools, Maison&Objet show photos, etc. are available here.



GIEN

78, Place de la Victoire . 45500 Gien . France
Tél. : +33 (0)2 38 67 00 05

www.gien.com